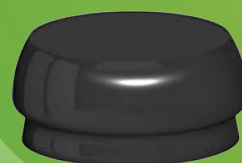
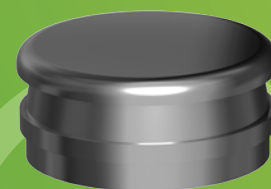


Ⓟ
Prosthetics



 AlphaBio^{TEC}
Simplantology

 AlphaLoc

Overdenture Attachments
for Implants

Minimal Height. Superior Retention.

AlphaLoc Overdenture Attachments for Implants

"Minimal height resilient attachment that provides superior retention"

Dr. Yoav Grossmann D.M.D.,
senior prosthodontist at Sheba
Medical Center, Israel

Alpha-Bio Tec, a leading dental company presents the new AlphaLoc overdenture attachments, offering dentists and laboratories multiple solutions for all case, including unique situations of limited interocclusal space and implant divergence.

The AlphaLoc overdenture-implant Attachment System is designed for use with full or partial dentures by endosseous implants in mandible or maxilla.

The AlphaLoc has been especially designed for optimal compatibility with Alpha-Bio Tec's internal hex implant systems.

AlphaLoc is an efficient, reliable, cost-effective and long lasting solution.



Retentive Caps

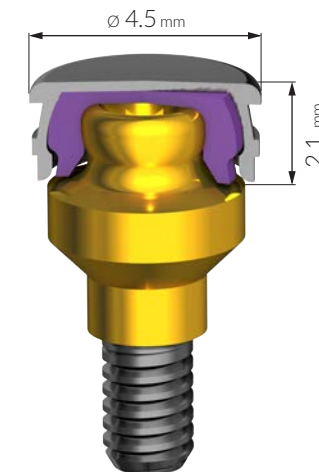
Four levels of retentive force, can be used to restore an implant with any required divergence angle (for extreme angles, Alpha-Bio Tec's UniCover is recommended).

Key Features and Benefits

First in Dimensions. First in Results.

AlphaLoc has the lowest vertical profile in the market, 2.1 mm, and the smallest width of 4.5 mm compared to the existing implant overdenture attachments.

- Ideal for use in limited interocclusal spaces
- Provides a wide range of clinical solutions
- The system's compact design benefits both the dentist and technician with incomparable planning and execution freedom



Key benefits:

- Minimizes occlusal and lateral forces on the implant
- Enhances overdenture acrylic thickness and strength
- Easier for patient handling
- Superior esthetic result
- Versatility - a variety of options for retention and angulation provides a wide range of clinical solutions
- Wide range of AlphaLoc abutments with different cuff heights for different tissue depths
- Composed of Alpha-Bio Tec's Titanium alloy, especially coated with TiN to minimize friction and maximize system's life length

Designed with customizable levels of retention

The various levels of retention of the nylon males can be customized according to the specific clinical cases.



Strong
2.5 Kg



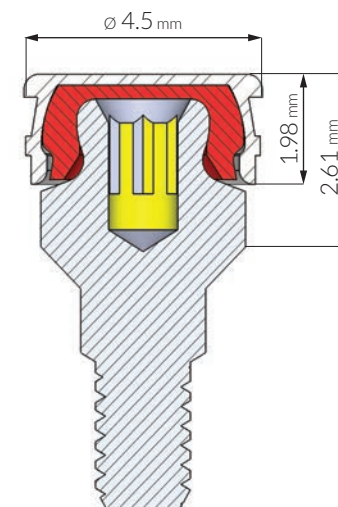
Soft
1.2 Kg



Standard
1.8 Kg



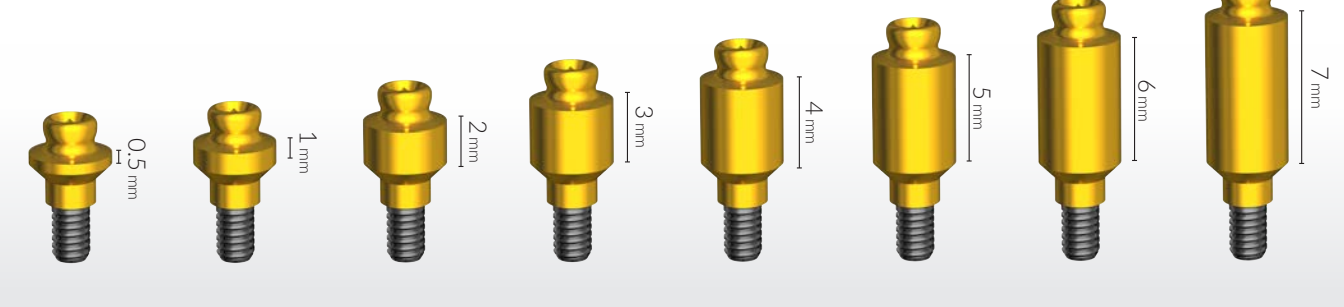
Extra Soft
0.6 Kg



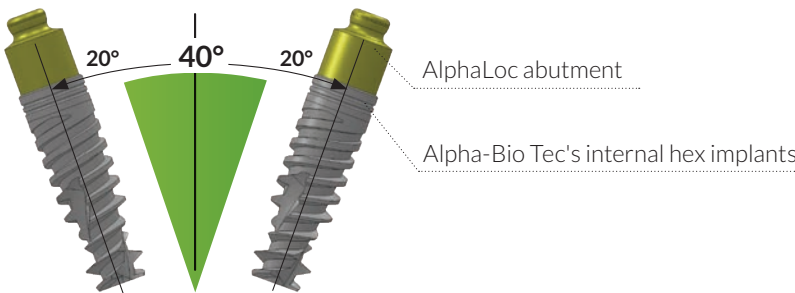
Key Features and Benefits

Versatile treatment options

Maximal versatility to suit various tissue depth heights



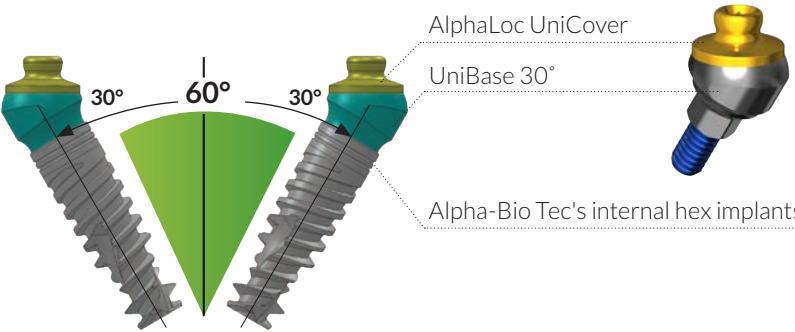
Designed to be used with parallel and non-parallel implants



A total of 4 retentive caps are needed to correct divergence of up to 40° between implants.



UniCover is recommended above 28 degrees of divergence between implants, allowing maximal durability of the caps and minimizing the frequency of patient follow-up (low maintenance).

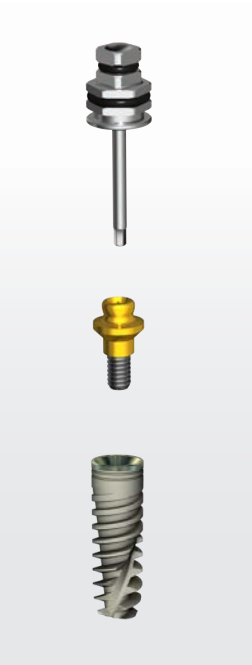


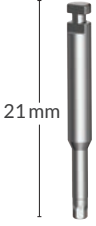





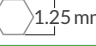

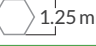
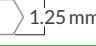
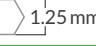
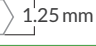
Key Features and Benefits

Compatibility

- Especially designed for optimal compatibility with all Alpha-Bio Tec's internal hex implant systems.
- Optimal fit to Alpha-Bio Tec's standard tools: hex manual screw driver 1.25 / contra angle motor mount / torque wrench driver as shown below.

The parts should be connected with 30 Ncm using a torque wrench



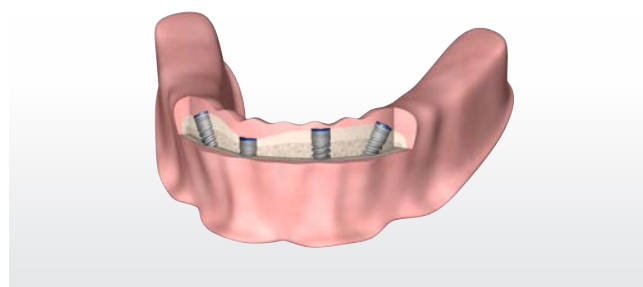
	Contra Angle Motor Mount	Hex Driver Short	Hex Driver	Hex Driver Long	Manual Screw Driver Short	Manual Screw Driver
						
	21 mm	11.5 mm	14.5 mm	20 mm	7 mm	13 mm
						
Ref. No.	4165	4056	4055	4061	4053	4052
Instructions	To be used with a contra angle motor		Fits hexagonal 6.35 mm (¼ inch) or square 4 mm ratchet		For Manual Use	

Workflow

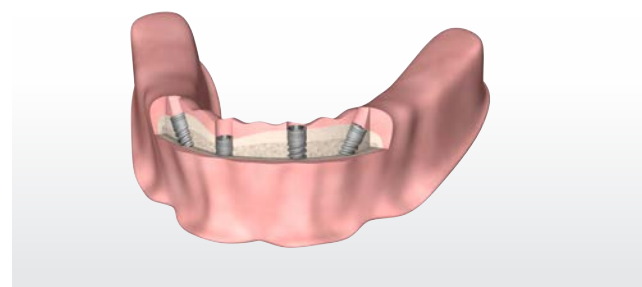


Clinical Steps

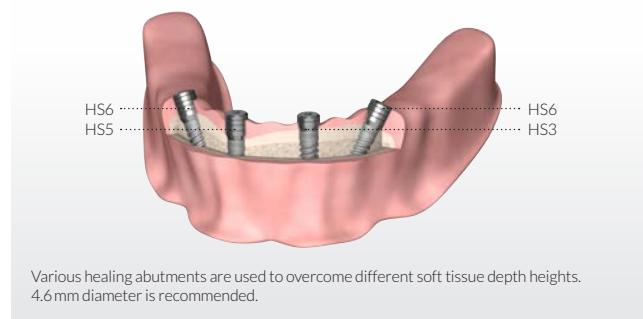
1 After Implantation



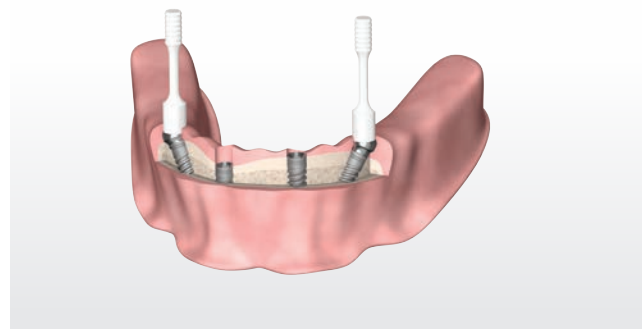
2 Implants Exposure



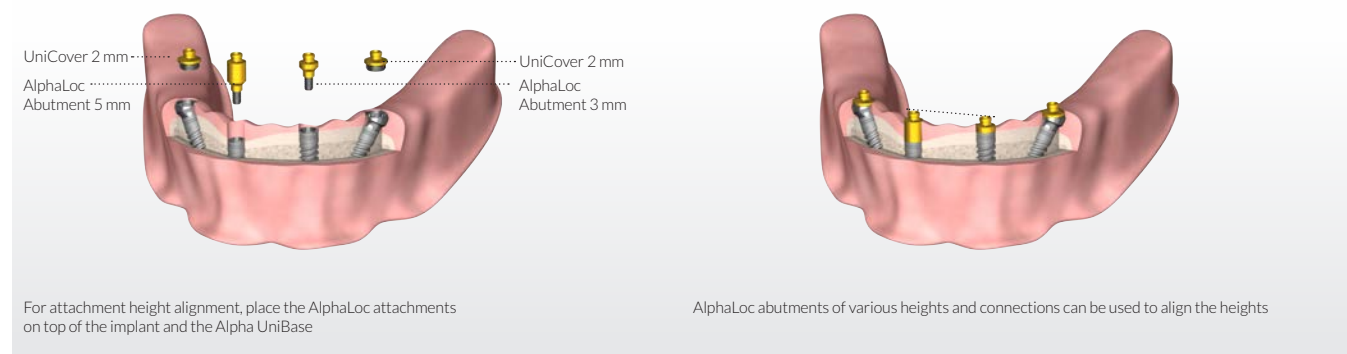
3 Healing Abutments



4 UniBase Placement



5 Attachment Connection



6 Impression Making using AlphaLoc Impression Coping

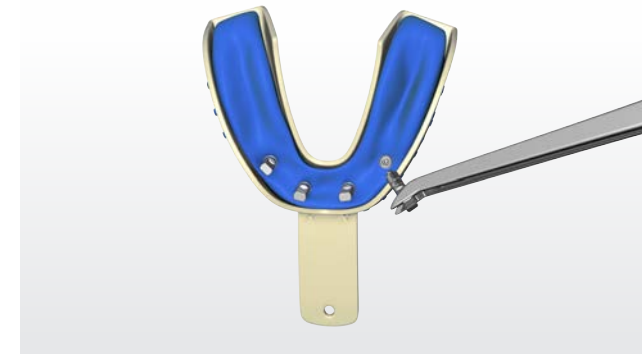


7 Place the impression coping on the AlphaLoc and UniBase attachments

The impression coping will be picked up in the impression



8 Insert the analog into the impression coping and pour the master model



Workflow

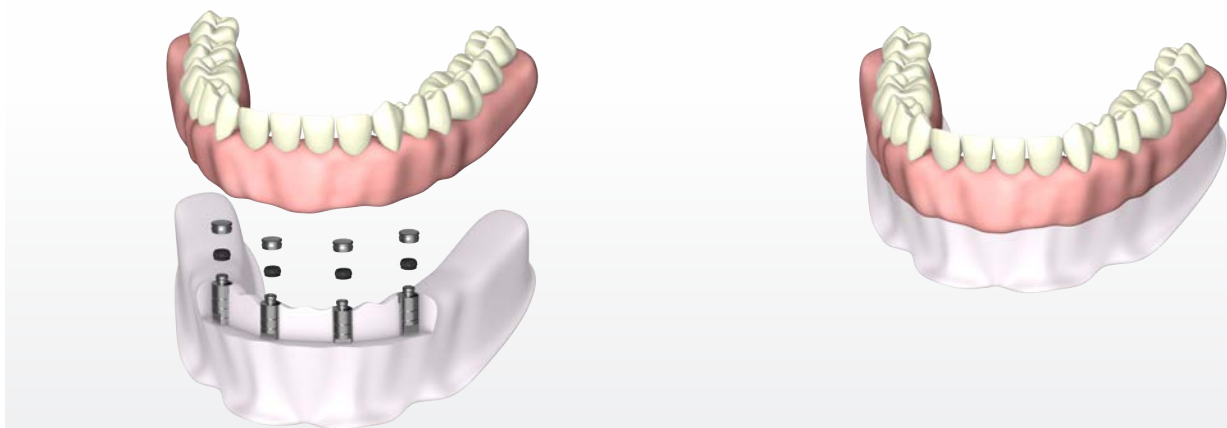
Laboratory Steps

(Metal Housing and Retentive Caps Placed by Dental Technician)

- 9 Fabrication of the master model.
Master model with analogs in position



- 10 Housing attached to overdenture by dental technician

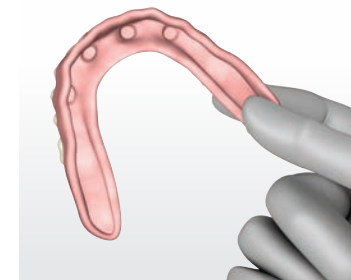


Chairside

- 11 Denture preparation

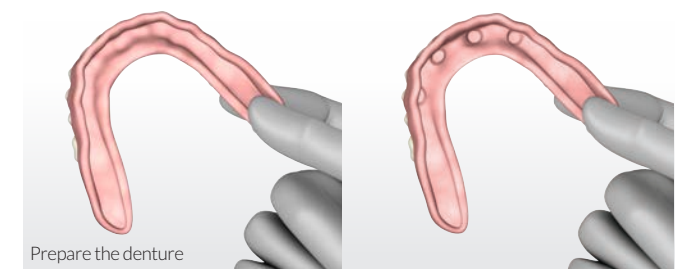
- 11a. Option 1

The preparations for the metal housing attachments are done by a dental technician

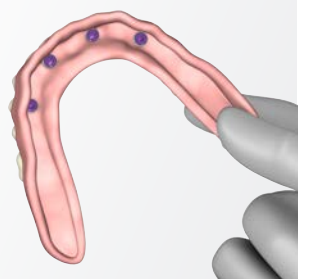


- Option 2

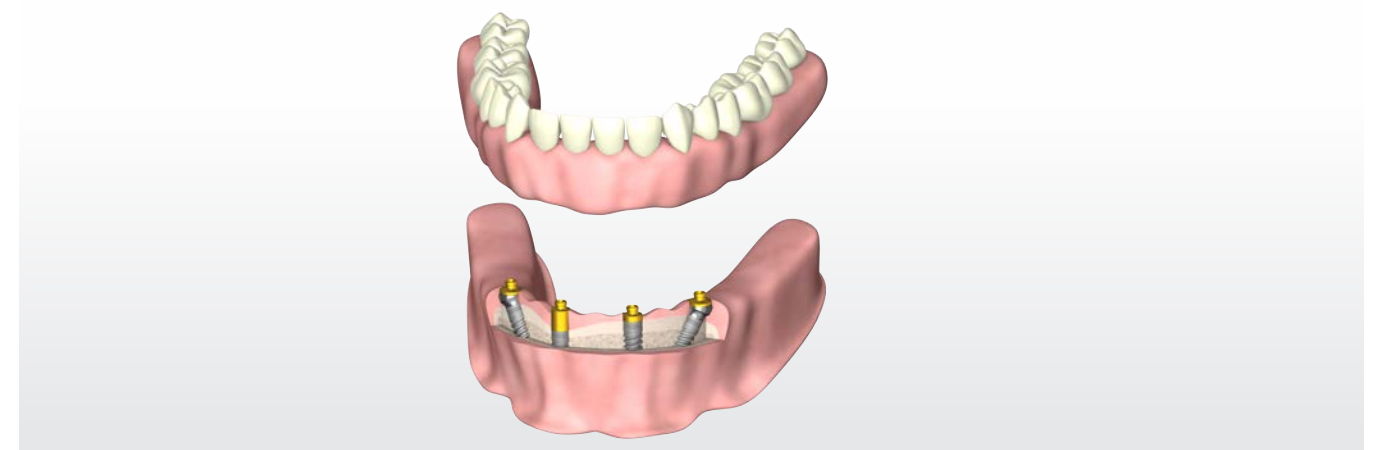
Chair-side preparations for the metal housing attachments are done by a dentist



- 11b. The recommended height between the shoulder of the attachment and the healthy soft tissue is 1 mm.
An adequate clearance and passiveness of the metal housing attachments inside the preparations should be checked.
Use block out spacer for overcoming potential undercuts between AlphaLoc abutments.
Carefully attach the metal housing and the denture using a self-curing resin.




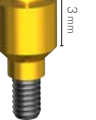

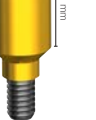






- 12 Denture delivery



Catalog Information



AlphaLoc Abutments Titanium alloy with TiN coating								
								
Height	0.5 mm	1 mm	2 mm	3 mm	4 mm	5 mm	6 mm	7 mm
Abutments Ref. No. (provided as single part, separately from the set)	4859	4860	4861	4862	4863	4864	4865	4866
Kit's Ref. No.								
AlphaLoc Kit: 1 Abutment (height can be selected as shown above 0.5-7 mm), 1 Stainless Steel Metal Housing, 4 Retentive Caps, 1 Block out Spacer, 1 Laboratory Cap	4867	4868	4869	4870	4871	4872	4873	4874
								
AlphaLoc Male Processing Package								
								
Ref. No.	4875							
Includes	Stainless Steel Housing, Block out Spacer, Nylon Replacement Males (violet, clear, pink and yellow), Laboratory Cap (black)							

AlphaLoc Replacement Male					
					
Ref. No.	4876	4877	4878	4879	
Retention	Strong (violet)	Standard (clear)	Soft (pink)	Extra Soft (yellow)	
AlphaLoc UniCover connected to UniBase		AlphaLoc UniCover Titanium alloy with TiN coating		UniBase	
					
Angle				17°	30°
Height		2 mm		1.5 mm	2.5 mm
Ref. No.		4880		5308	5309
				5312	5313
AlphaLoc Laboratory Cap (black)		AlphaLoc Block Out Spacer*	AlphaLoc Impression Coping	AlphaLoc Female Analog	AlphaLoc Insertion Tool
					
Content	4 Units	1 Unit	4 Units	4 Units	1 Unit
Ref. No.	4882	4883	4884	4885	4886
					
					1 Unit
					4887

* When connecting the metal housing and the denture with a fluid acrylic in patient's mouth, the disk is used to isolate the abutment's undercuts.



Prosthetics

© Alpha-Bio Tec All Rights Reserved. 995-0271 R2/02.19



Alpha-Bio Tec's products are cleared for marketing in the USA* and are CE-marked in accordance with the Council Directive 93/42/EEC. Alpha-Bio Tec's complies with EN ISO 13485:2016. Product availability may vary between countries.

Smart Implantology Solutions

Alpha-Bio Tec Ltd.

www.alpha-bio.net

