

Ⓟ
Prosthetics



PEEK

Temporary Abutments

Fast Modification With High
Esthetic Outcomes



PEEK TEMPORARY ABUTMENTS

Alpha Bio-Tec, a leading manufacturer of implants, prosthetic parts and dental accessories presents the new PEEK temporary abutments, offering a simple solution for temporary restorations.

PEEK (Polyetheretherketone) is a high-grade thermoplastic polymer, characterized by a superior strength, elasticity and resilience. PEEK supports both cement-retained and screw-retained temporary restoration and is ideal for immediate loading and immediate implantation of both single and multiple teeth.

PEEK abutments are reliable, easy to modify, cost-effective and provide excellent esthetics.



STRAIGHT



15°



25°

CLINICAL BENEFITS

- High esthetic results due to its design and off-white color
- PEEK polymer allows easy and quick chair-side modification
- Provides adequate strength to the provisional restoration
- Very good biological compatibility
- Excellent mechanical properties such as stiffness, toughness, and durability
- Prevents thermal conduction
- High resistance to repetitive mastication forces
- Less forces transmitted through polymer
- High chemical resistance
- Can be sterilized without degradation in mechanical properties or biocompatibility
- X-ray/CT compatible

INTENDED USE

- Cement-retained or screw-retained temporary restoration
- Single or multiple teeth temporary restorations
- Highly recommended for immediate loading and immediate implantation

IMPORTANT INFORMATION

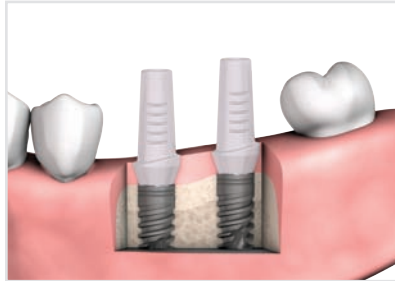
- PEEK temporary abutments are suitable for provisional/temporary applications for up to 180 days
- The abutments and the tools should be treated the same way as standard titanium temporary abutments.
- The abutments are supplied non-sterile
- The abutments can be steam-sterilized using 121°C for 30 minutes
- The abutments should be connected manually to the implant using a 1.25 mm screw driver, or by surgical tool using a 15N-cm torque wrench
- The abutments are intended for single use only



SUGGESTED TECHNIQUE FOR CEMENTED PROVISIONAL RESTORATION

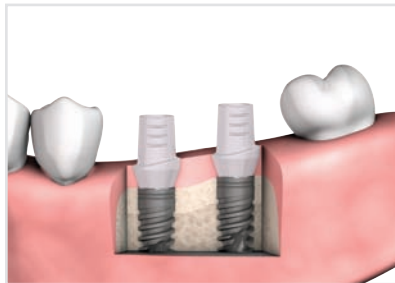
1

PEEK abutment assembly after implant exposure



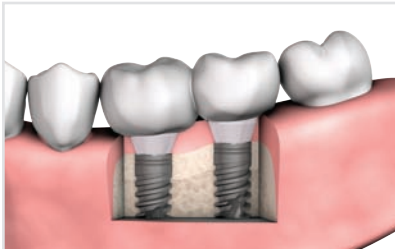
2

Create adequate occlusal clearance and parallelism between the abutments for provisional restoration*



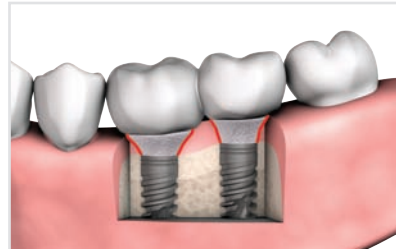
3

Fit temporary/provisional restoration**



4

Create emergence profile at chair-side with flowable composite and check fitments of the restorations



5

Cement the provisional restoration on top of the PEEK abutments using temporary cement***



6

Final occlusal check

1. Light occlusal contacts
2. No extrusive contacts (remove lateral forces)

Notes:

The above instructions do not replace the obligatory training. Inadequate training may cause the restoration to fail. Recommended for standard restoration and for immediate loading on inclined implants.

* We recommend performing these manipulations outside the patient's mouth.

** The provisional restoration should be cemented with the PEEK abutments at chair-side.

*** Carefully clean the excessive cement.

SUGGESTED TECHNIQUE FOR SCREWED PROVISIONAL RESTORATION

1

PEEK abutment assembly after exposure



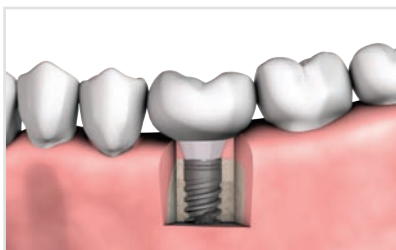
2

Cut to occlusion outside the patient's mouth using high speed diamond bur



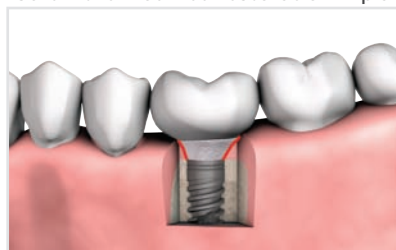
3

Fit temporary/provisional restoration*



4

Create emergence profile and finish the provisional restoration outside the patient's mouth. Screw the modified restoration in place.



5

Close access hole



6





Final occlusal check

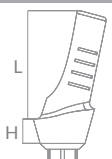



1. Light occlusal contacts
2. No extrusive contacts (remove lateral forces)

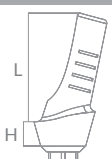


Notes:

The above instructions do not replace the obligatory training. Inadequate training may cause the restoration to fail. Recommended for standard restoration and for immediate loading on non-inclined implants. To improve the bond between the PEEK and the provisional restoration, it is recommended to roughen the surface of the PEEK with a diamond bur or with an air abrasion.

* The provisional restoration should be connected to the PEEK abutment at chair-side. The provisional restoration should be created around the PEEK and cemented to it.

STRAIGHT			
			
Dimensions	L: 9 mm, H: 1mm	L: 9 mm, H: 2mm	L: 9 mm, H: 3mm
Code	TPA1	TPA2	TPA3
Ref. No.	5416	5417	5418

15°			
			
Dimensions	L: 8 mm, H: 1mm	L: 8 mm, H: 2mm	L: 8 mm, H: 3mm
Code	TPA1-15	TPA2-15	TPA3-15
Ref. No.	5419	5420	5421

25°		
		
Dimensions	L: 8 mm, H: 1mm	L: 8 mm, H: 2mm
Code	TPA1-25	TPA2-25
Ref. No.	5422	5423



Prosthetics



Smart Implantology Solutions



OUR WARRANTY - YOUR PEACE OF MIND

For more information, please visit our website www.alpha-bio.net

Alpha-Bio Tec's products are CE-marked in accordance with the Council Directive 93/42/EEC and Amendment 2007/47/EC. Alpha-Bio Tec complies with ISO 13485:2012 and the Canadian Medical Devices Conformity Assessment System (CMDCAS).

www.alpha-bio.net